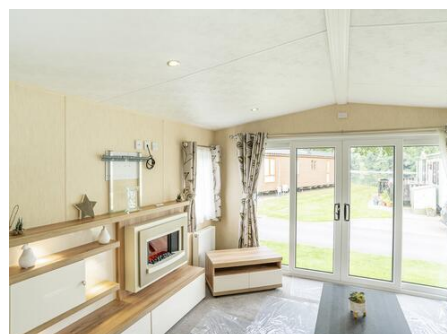


Discover Parks

Where life feels right

BK Sherborne. 2 Bedrooms 39 x 12.6

- Open plan living
- Superb layout
- Stylish interior
- Sliding patio doors
- Spacious kitchen
- Lovely natural light
- Family shower room
- En-suite shower room



BK Sherborne

The Sherborne has just come back into stock at Pearl Lake. A superb pre-owned holiday home that should be ticking all the boxes you can think of.

The side entrance door brings you into the kitchen area. A spacious layout with plenty of worktop space, a large American style fridge/freezer and a dining table for 4 people.

The open plan living area, from the kitchen through the lounge to the sliding patio doors is full of natural light. A large corner sofa in the lounge and feature fireplace create a relaxing environment. There is space to mount the TV on the wall over the fireplace.

A twin bedroom (family and guests) and a shower room are passed as you move to the master bedroom. An atmospheric, comfortable haven with dressing table, plenty of storage, a walk-in wardrobe and an en-suite shower room.

Fantastic condition and a must-see holiday home.

For more information, please call us direct on 01568 708326 or email us



Pearl Lake
COUNTRY HOLIDAY PARK

SHOBDON, LEOMINSTER, HEREFORDSHIRE HR6 9NQ 01568 708326 INFO@PEARLLAKE.CO.UK