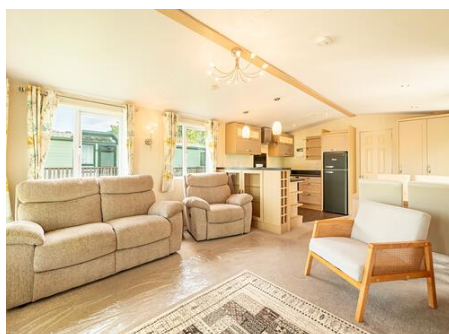


# Discover Parks

*Where life feels right*

## Regal Autograph. 2 Bedrooms 40' x 13'

- Spacious interior
- Open plan living
- Large glazed front
- Patio doors
- Wine rack
- Great storage
- Family shower room
- En-suite w.c.
- For sale on plot



## Regal Autograph

At Pearl Lake Country Holiday Park

Set on a peaceful plot within a prestigious 5-star holiday park, this beautifully maintained pre-owned Regal Autograph offers exceptional build quality and timeless style. From the moment you step inside, the craftsmanship and attention to detail are evident, making this an outstanding opportunity for those seeking a holiday home that blends comfort, elegance, and practicality.

The open-plan living area is generously proportioned, with a large three-piece suite positioned to take full advantage of the natural light streaming in through the patio doors and glazed front elevation. The space flows effortlessly into the well-appointed kitchen and adjacent dining area, where everything is thoughtfully arranged to keep the chef connected to the heart of the home.

Accommodation includes a twin bedroom, a family shower room, and a superb master bedroom at the rear of the property, complete with its own en-suite WC. Each room has been designed to provide comfort and convenience, ensuring every stay is a pleasure.

With its desirable location, excellent layout, and outstanding presentation, the Regal Autograph is a rare find. Arrange your viewing and discover why this could be your perfect holiday escape.

For more information, have a chat with our Ownership Team on 01568 708326 or 07379 789 312 or contact us



# Discover Parks

*Where life feels right*

We would love to see you soon.



**Pearl Lake**

COUNTRY HOLIDAY PARK

SHOBDON, LEOMINSTER, HEREFORDSHIRE HR6 9NQ 01568 708326 [INFO@PEARLLAKE.CO.UK](mailto:INFO@PEARLLAKE.CO.UK)